

# MOLETEADORES POR DEFORMACIÓN FORM-KNURLING TOOLS



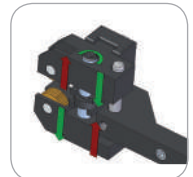
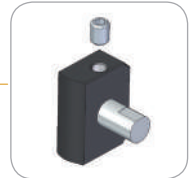
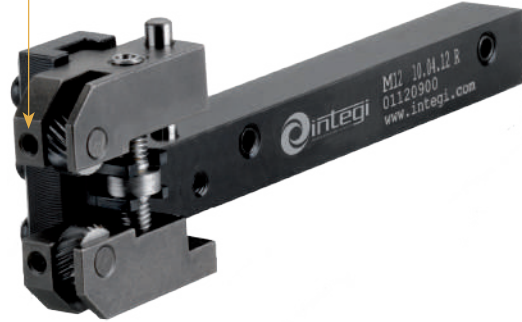
## M12

### + Características

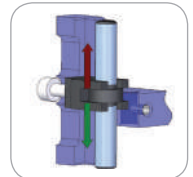
- Recomendado para moleteados tipo RGE en piezas de pequeño diámetro
- Menor riesgo de flexión de la pieza al no ejercer presión radial
- Sistema de centrado para compensar un posible desalineamiento del torno (Fig. 2)
- Ajuste y centrado de las moletas sobre la pieza mediante husillo roscado (Fig. 1)
- Ejes de metal duro
- Superficie de los brazos endurecida para una mayor resistencia al desgaste
- Ajuste del ángulo de ataque mediante tornillos integrados en el mango

### + Features

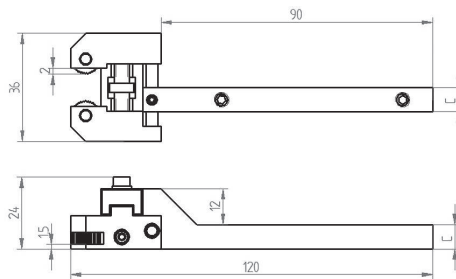
- Recommended for RGE type knurling on small diameter workpieces
- Lower risk of bending the workpiece as tool does not make radial pressure
- Self-centering system to compensate a possible misalignment of the lathe turret (Fig. 2)
- Knurls self-centering by threaded spindle (Fig. 1)
- Carbide pins
- Anti-wearing treatment of the arms surface.
- Adjustment of tool clearance angle by threaded studs integrated in the shank



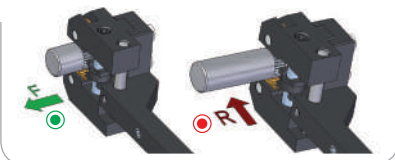
(Fig. 1)



(Fig. 2)



### + Avance Feed



### + Formas de moleteados realizables Feasible knurling forms

	RAA	<sup>R</sup> RGE 30°	<sup>R</sup> RGE 45°
Tipo de moleteado Knurling form			
Con moleta tipo With knurl type	AA+AA	BL30° + BR30°	BL45° + BR45°
Avances permitidos Allowed feeds	F ● R ●	F ● R ●	F ● R ●

<sup>R</sup> Moleteados recomendados | Recommended knurling

Herramienta   Tool						
Código Code	Referencia Reference	Versión Version	Capacidad Capacity	Moleta Knurl	C	Kg
01120700	M12 10.04.10 R	R	Ø 1-12	10x4x4	10	0.2
01120800	M12 10.04.10 L	L	Ø 1-12	10x4x4	10	0.2
01120900	M12 10.04.12 R	R	Ø 1-12	10x4x4	12	0.2
01121000	M12 10.04.12 L	L	Ø 1-12	10x4x4	12	0.2
01121100	M12 10.04.16 R	R	Ø 1-12	10x4x4	16	0.2
01121200	M12 10.04.16 L	L	Ø 1-12	10x4x4	16	0.2

Repuesto   Spare Part	
Código Code	Referencia Reference
01989701	E 12.4 HM

