



MOLETEADORES POR DEFORMACIÓN FORM-KNURLING TOOLS



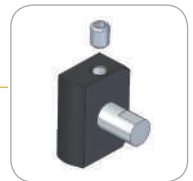
M19

+ Características

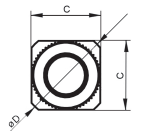
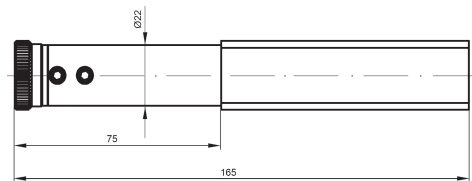
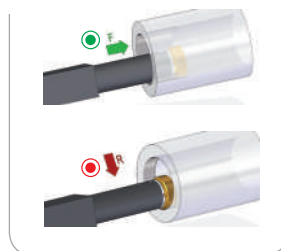
- Recomendado para moleteados tipo RAA
- Para moleteado interior
- Eje de HSS
- Provista de arandela de HSS para evitar el desgaste de la herramienta

+ Features

- Recommended for RAA type knurling
- For internal knurling
- HSS bushing
- Supplied with a HSS hardened washer to prevent tool wearing



+ Avance Feed



+ Formas de moleteados realizables Feasible knurling forms

	^R RAA	RBL 30°	RBL 45°	RBR 30°	RBR 45°	RGE 30°	RGE 45°	RGV 30°	RGV 45°	RKE	RKV
Tipo de moleteado Knurling form											
Con moleta tipo With knurl type	AA	BR 30°	BR 45°	BL 30°	BL 45°	GV 30°	GV 45°	GE 30°	GE 45°	KV	KE
Avances permitidos Allowed feeds	F ● R ●	F ● R ●	F ● R ●	F ● R ●	F ● R ●	R ●	R ●	R ●	R ●	R ●	R ●

^R Moleteados recomendados | Recommended knurling

Herramienta Tool							
Código Code	Referencia Reference	Versión Version	Capacidad Capacity	Moleta Knurl	C	D	Kg
01190100	M19 25.10.20	R+L	Ø 30-200	25x10x15/11	20	25	0.7
01190200	M19 25.10.25	R+L	Ø 30-200	25x10x15/11	25	32	0.8

Repuesto Spare Part	
Código Code	Referencia Reference
01983200	EAM10

