



# MOLETEADORES POR DEFORMACIÓN FORM-KNURLING TOOLS



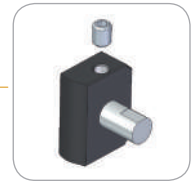
## M22-B

### + Características

- Recomendado para moleteados tipo RGE en piezas de pequeño diámetro
- Menor riesgo de flexión de la pieza al no ejercer presión radial
- Sistema de centrado para compensar un posible desalineamiento del torno (Fig. 1)
- Ajuste y centrado de las moletas sobre la pieza mediante husillo roscado (Fig. 2)
- Superficie de los brazos endurecida para una mayor resistencia al desgaste
- Para moleteados hasta una cara lateral (Fig.3)

### + Features

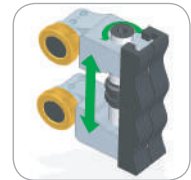
- Recommended for RGE type knurling on small diameter workpieces
- Lower risk of bending the workpiece as tool does not make radial pressure
- Self-centering system to compensate a possible misalignment of the lathe turret (Fig. 1)
- Knurls self-centering by threaded spindle (Fig. 2)
- Anti-wearing treatment of the arms surface
- For knurling up to a shoulder (Fig.3)



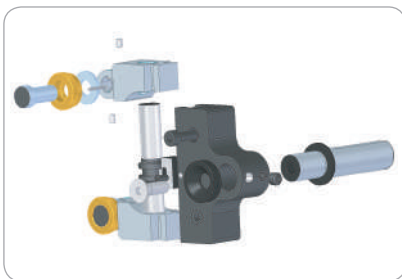
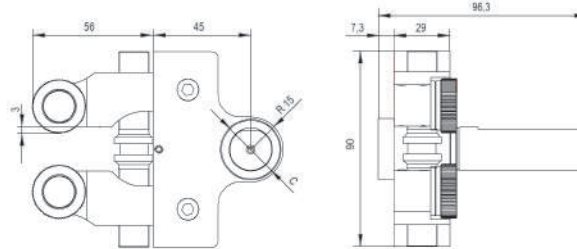
(Fig. 1)



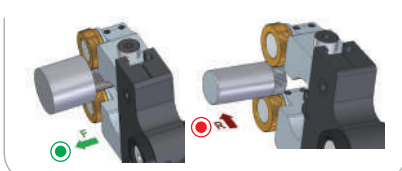
(Fig. 2)



(Fig. 3)



### + Avance Feed



### + Formas de moleteados realizables Feasible knurling forms

	RAA	RGE 30°	RGE 45°
Tipo de moleteado Knurling form			
Con moleta tipo With knurl type	AA+AA	BL30° + BR30°	BL45° + BR45°
Avances permitidos Allowed feeds	F ● R ●	F ● R ●	F ● R ●

**R** Moleteados recomendados | Recommended knurling

Herramienta   Tool						
Código Code	Referencia Reference	Versión Version	Capacidad Capacity	Moleta Knurl	C	Kg
01300101	M22 D3/4"-B	R+L	Ø 6-50 mm	25x10x15/11	19.05	1.7
01300201	M22 D20-B	R+L	Ø 6-50 mm	25x10x15/11	20	1.7
01300301	M22 D22-B	R+L	Ø 6-50 mm	25x10x15/11	22	1.7
01300401	M22 D25-B	R+L	Ø 6-50 mm	25x10x15/11	25	1.7
01300501	M22 D1"-B	R+L	Ø 6-50 mm	25x10x15/11	25.4	1.7

Repuesto   Spare Part		
Código Code	Referencia Reference	
01983200	EAM10	