



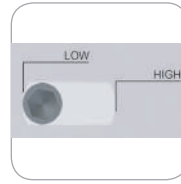
HERRAMIENTAS DE BRUÑIDO BURNISHING TOOLS



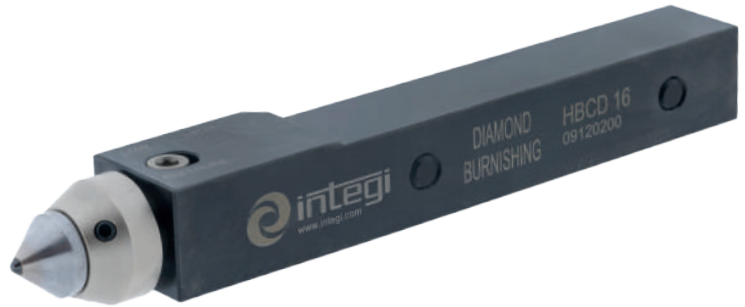
HBCD

+ Características

- Herramienta diseñada para bruñir en tornos de cabezal móvil, superficies exteriores de formas variadas
- Mango centrado
- Cabeza provista de un sistema interno de resorte que regula la presión haciéndola homogénea en todas las piezas (Fig.1)
- Utilizable sobre piezas de diferentes tipos de materiales con durezas de hasta 63 HRC
- Posibilidad de colocar la punta de diamante en diferentes posiciones para prolongar la vida del útil

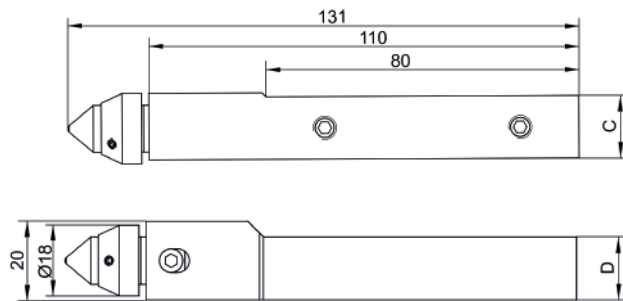


(Fig.1)

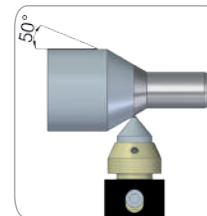
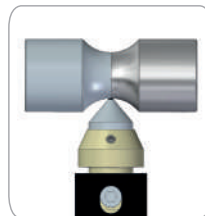
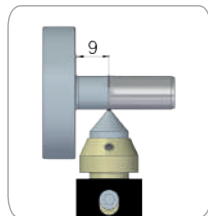


+ Features

- Tool designed for burnishing external diameters of various shapes on sliding head lathes
- Centred shank
- The head is equipped with an internal spring system to regulate the pressure of the diamond tip, making it homogeneous on all parts (Fig.1)
- Can be used on workpieces made of different types of materials with hardness up to 63 HRC
- Possibility of placing the diamond tip in different positions to extend the life of the tool



+ Avance Feed



Herramienta Tool						
Código Code	Referencia Reference	Versión Version	Diamante Diamond	C	D	Kg
09120100	HBCD 12	R+L	DT 12	12	16	0.3
09120200	HBCD 16	R+L	DT 12	16	16	0.3

Punta de diamante Diamond tip	
Código Code	Referencia Reference
10010104	DT 12-R0.4
10010108	DT 12-R0.8
10010110	DT 12-R1.0
10010120	DT 12-R2.0

